



Whalley Range
Sixth Form College

Prospectus

Rise With Us



Through my education,
I didn't just **develop skills**,
I didn't just **develop the ability to learn**,
but I **developed confidence**.

If you are committed to doing
what it takes, **anything is possible**.

Michelle Obama

Welcome from the Academy Headteacher



Whalley Range
Sixth Form College

At Whalley Range 11-18 High School, we are extremely proud of our Sixth Form as it provides our students with challenge, support, individual guidance and an opportunity to grow and develop in a caring environment. We have a clear mission to educate, inspire and empower young women to be leaders of the future.

Our Sixth Form has a highly skilled, experienced, supportive and dedicated team of tutors and teachers who work with our students to secure their best outcomes. We offer a personalised pastoral and teaching support system. We offer a wide range of courses at all levels, including A Levels, T Levels, BTECs and the Extended Project Qualification. Additionally, our students benefit from a comprehensive programme of enrichment, including a range of extra-curricular activities, clubs and leadership opportunities.

We work closely with local universities and employers and benefit from committed relationships with a wide range of partners, including the Alliance Manchester Business School and Deloitte. These partnerships enrich our comprehensive learning programme and help prepare students for a successful future.

Our Sixth Form is housed in a state of the art building. This includes dedicated independent study areas, flexible learning facilities and purpose-built social spaces.



Ms Jackie Fahey,
Academy Headteacher



Welcome from the Head of Sixth Form

Choosing where to study post-16 is one of the most important decisions that you will make in your educational journey. As the only non fee paying, all girls' sixth form college in Manchester, we can offer an environment that not only sets up your further education pathway, but creates a path to your future career and prepares you for adult life.

Whalley Range Sixth Form is a firmly established college which provides academic and vocational courses for young women of all abilities. We ensure progression to Higher Education, Apprenticeships or employment. The vision for our Sixth Form is to prepare our students to change the world by developing their independence and leadership skills, allowing them to make a real difference in their studies and to their lives.

As an all-girls' college, we provide a unique learning experience for our students. Our values are firmly rooted in our diverse and multicultural community and in the Cooperative Values promoted by our multi-academy Trust.

All students have the opportunity to enhance their experience through extra-curricular activities such as the Extended Project Qualification, Duke of Edinburgh's Scheme, partnering with Deloitte, volunteering, mentoring younger students, sports leadership and citizenship activities.

Whalley Range Sixth Form has a rich and vibrant enrichment programme that is tailored to be bespoke each year, based on the interests and passions of our students.

Students from our college boast huge successes on their academic and vocational pathways and they progress to have successful careers in pharmacy, law, medicine and midwifery to name but a few. Our students are focussed and driven to achieve and they have a strong track record of academic success with us.

I hope that you find this prospectus useful and get a sense of what makes Whalley Range Sixth Form unique and special. If you would like to speak to me or arrange a visit, please email sixthform@wrhs1118.co.uk



Mr Steven Mycock
Assistant Headteacher
Head of Sixth Form

Our values...

R

Respect

Our students respect each other, themselves and the Whalley Range Sixth Form community

I

Integrity

Our students are honest and act with strong moral purpose

S

Strength

Our students are strong, independent women who are the leaders of the future

E

Excellence

Our students excel, as Whalley Range Sixth Form pride ourselves on striving for excellence in what we do



Whalley Range
Sixth Form College



When girls go to single-sex schools, they stop being the audience and become the players.

Robin Robertson



The vision for our Sixth Form is to prepare our students to change the world by developing their independence and leadership skills, allowing them to make a real difference in their studies and to their lives.

Why Choose a Girls' School?



Create a culture of achievement



Dedicated to how girls learn



Focussed educational & community environment



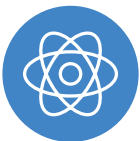
Empower girls to become bold leaders



Greater opportunities



Career aspirations are not limited or discouraged



Champion the educational needs of girls as a group under-represented in STEM careers.



Sixth form leavers are 6 times more likely to consider studying maths, science, and technology compared to girls who attend mixed schools.

What is your career pathway?



Whalley Range
Sixth Form College

A Level

A Levels are Level 3 qualification which prepare you for further academic study. A Levels can be studied in a variety of subjects and are offered in a range of faculties. Students on an A Level pathway at Whalley Range Sixth Form achieved some of the highest progress rates in Manchester. You will typically choose 3 A Levels in your first year and study these until the end of Year 13.

T Level

Designed with key employers, T Levels are a two-year, Level 3 programme that follow GCSEs and could give you a head start in the career you are pursuing. T Levels are a smart choice for your future as they open doors to both Higher Education and the world of work. We currently offer the Administration and Management T Level which involves academic study in college alongside work placements.

Applied (BTEC Diploma & Extended Certificate)

BTEC Diploma & Extended Certificate courses are Level 3 qualifications and consist of a mixture of exams, coursework and controlled assessments. On an Applied pathway you will choose to study two subjects: one BTEC Diploma equivalent to 2 A Levels; and one BTEC Extended Certificate equivalent to 1 A Level.

Blended (A Level(s) and BTEC Diploma/Extended Certificate)

The Blended Pathway offers students the opportunity to study a combination of A Level and Advanced Vocational courses. This pathway offers students a rich mix of traditional academic learning and vocational studies. There are various combinations of A Level and Vocational subjects that can be studied and these can be found on our courses page www.wrhs1118.co.uk/wrsf-courses

Intermediate Vocational

The Intermediate Vocational pathway is most suitable for students that narrowly missed out on achieving grade 4s in English and maths. This pathway lasts for 1 year and many students graduate to complete Level 3 courses at WRSF before going on to higher education or apprenticeships.

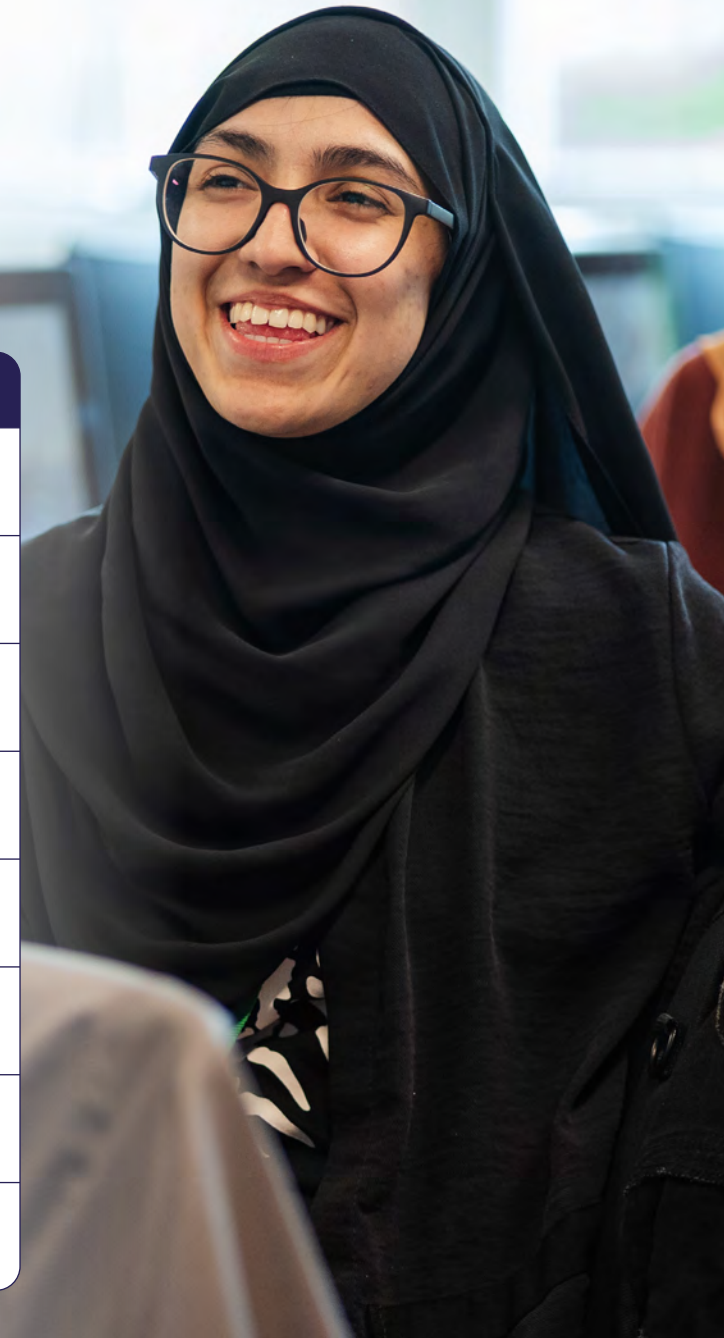
Which pathway should I follow?

Choose your pathway according to your projected grades. If you are choosing a Level 3 pathway, you must study the equivalent of three A Levels but this can be made up of a combination of traditional A Levels and/or BTEC level 3 qualifications.

Which subjects should I choose?

When you are selecting your subjects, you should choose ones that you enjoy, are good at and will need for a specific career, university course or higher level apprenticeship.

What is your career pathway?



Pathway	Entry Requirements
A Level Pathway (4 A Levels)	All GCSE grades 8/9
A Level Pathway (3 A Levels)	5 x GCSE grades 9-4 including 2 x grades 6s and 4+ in Maths & English Language
T Level:	5 x GCSE grades 9-4 including 4+ in Maths & English Language
Blended Pathway B (2 A levels and Extended Certificate)	5 x GCSE grades 9-4 including 4+ in Maths & English Language
Blended Pathway C (1 A level and Diploma)	5 x GCSE grades 9-4 including 4+ in Maths & English Language
Applied (Diploma & Extended Certificate)	5 x GCSE grades 9-4 including 4+ in English Language
Intermediate Vocational	Level 2 pathway: fewer than 5 x grades 9-5 with the majority of GCSE grades are 3s including minimum grade 2 in both Maths & English Language
Intermediate Vocational	Level 1 pathway: majority of GCSE grades are 2s including grade 2 in both Maths & English Language

What can I study at Whalley Range Sixth Form?



Whalley Range
Sixth Form College

From the start of the application process to Whalley Range Sixth Form, and throughout, you will receive expert support and guidance to ensure that you select the courses that are right for you. Our staff are highly experienced in guiding students through this process and they will offer bespoke support and advice.

A Levels Pathway

- Arabic
- Biology
- Business Studies
- Chemistry
- Computer Science
- English Language
- English Literature
- Geography
- History
- Media Studies
- Physics
- Psychology
- Religious Studies
- Sociology
- Urdu
- The Extended Project Qualification
(Equal to 1/2 an Advanced Level)

BTEC Level 3

- Applied Criminology
- Applied Science
- Business
- Health and Social Care
- Information Technology

Intermediate Vocational

- Business
- Health and Social Care
- GCSE English
- GCSE Maths
- Sport and Activity Leader

Visit our website for more details on all of our courses
Find us at wrhs1118.co.uk



T Levels

Designed with key employers, T Levels are a Level 3 qualification studied over two years which will give you a head start in the career you are pursuing. T Levels are a smart choice for your future as they open doors to both Higher Education and the world of work

Where can my T Level take me?

These qualifications ensure you will have the skills and knowledge businesses want and prepare you for:

- Apprenticeships
- Degree Apprenticeships
- Employment
- Higher Education

What's involved?

A T Level is made up of the following components:

Technical Qualification:

- Management and Administration core
- Occupational Specialisms

Industry Placement

45-day industry placement in a high quality setting where you will be able to develop a range of skills to support your work-related skills such as time management, organisation, teamworking, communication and leadership.

Overview of the Technical Qualification

To achieve the T Level Technical Qualification (TQ) in Management and Administration you'll need to complete the two components of the TQ. These are known as the Core component and the Occupational Specialism. You will choose one of the three Occupational Specialisms to study alongside the Core component.

Core:

Assessed by two externally set and marked exams and an employer set project.



Management and Administration

Occupational Specialisms:

Assessed by a practical assignment for each occupational specialism.



Team
Leadership/
Management



Business
Support



Business
Improvement

The industry placement

At the heart of the T Level is the valuable industry experience that will give you the edge over other learners who take a purely academic pathway.

You will benefit from the opportunity to:

- Understand the world of work and start networking with potential future employers
- Put your studies into context and practice developing skills in a real work environment
- Gain the experience of being in a workplace setting that lasts at least 45 days
- Check this is the career you want to pursue
- Gain real experience to put on your CV and to talk about at an interview

- Potentially secure a job or apprenticeship with the employer after you have completed your T Level
- Attend your industry placement as day release, block release or a mixture of both. This could also be split across up to two employers.

Is this T Level right for me?

Speak to your Careers Adviser to find out if this T Level is right for you.

Visit the government's website to learn more and visit the Sixth Form's website where you can make contact with staff who will be delivering this T Level course.



tlevels.gov.uk/students/find
<https://wrhs1118.co.uk/sixthform/wrsf-courses/tlevel-management-and-admin>

Alternatively, learn more at:



i-l-m.com/tlevels
cityandguilds.com/tlevels/business

Will my T Level attract UCAS points?

T Levels are a nationally recognised programme and have been allocated UCAS points. You must achieve at least an overall pass grade to receive UCAS points.

Here is an example of T Level grade structure alongside A Level.

UCAS tariff points	T Level overall grade	A Level equivalent
168	Distinction* (A* on the core and distinction in the Occupational Specialism)	AAA*
144	Distinction	AAA
120	Merit	BBB
96	Pass (C or above on the core)	CCC
72	Pass (D or E on the core)	DDD

Developed by the industry for the industry

The Management and Administration TQ has been built with employers to make sure that you get the skills needed for your next step.



Whalley Range
Sixth Form College

These are some of the organisations who have supported the qualification development:



Your Whalley Range Sixth Form journey

Deciding where to study after Year 11 is a difficult decision and Whalley Range Sixth Form will endeavour to support you through your application, enrolment and college journey to ensure that you have a unique learning experience that has been tailored for you.



Academic Mentors

Mentors come from local companies in Manchester such as Deloitte, Grant Thornton UK LLP, NHS, Manchester Local Authority and IT

Consultancy Company. Your mentor will meet with you on a monthly basis and offer support exploring possible career pathways, preparing a C.V. and practising interview techniques.



Duke of Edinburgh

We participate in the Duke of Edinburgh's scheme and give students the opportunity to complete their silver and gold awards.



Form Tutors

Experienced Form Tutors guide you through your course and offer you constructive advice on how to maximise your potential.



Student Mentors

Sixth Form students mentor younger students to help improve their reading ages and maths skills, developing interpersonal communication, organisation skills and confidence.



Action Committee

The Sixth Form action committee is the vehicle used to embed student-driven change in the Sixth Form.

They work on behalf of the students to achieve positive change within the school. Some of which include changes to the Sixth Form lunch area, celebration trips and subject-specific progression talks in law, accountancy and from the NHS.



Student Leaders

Our Student Senior Leadership Team lead on key strategic whole-school areas such as extra-curricular activities,

environment, PSHE and student voice, as well as work with senior staff leaders in school.



Leadership Clubs

A range of different leadership clubs to choose from, including sports, business, the SSAT award, charity, art, STEM, culture club and the SSAT accredited award. Our students build skills for their next step and valuable employability skills for the future.



Travel Pass

If you are over 16 and under 18 on 31st August 2021, you can travel across Greater Manchester for free with 'Our Pass'.



Reading Boost

Grow your confidence with academic reading through a tailored package based on your reading age. Subject-related and reading for pleasure

resources and activities are recommended to improve your ability to comprehend and read at speed.



University Ready

Staff from local universities present to students to inform you on the range of courses available and provide you with advice on completing your UCAS application.



Learning Mindset

Develop your learning mindset with the VESPA model 'Vision, Effort, Strategy, Practice, Attitude' and its targeted practical activities. You will

be coached to develop your character and ability to overcome challenges, unlocking performance that will enable you to achieve your target grades or better.



Whalley Range
Sixth Form College



Exams

Key statistics

Level 3

The overall Level 3 pass rate is 95.1%, with the BTEC Level 3 pass rate being 100% and the average BTEC Level 3 grade being 'Merit+'

100%

A Grades

14% of all students gained at least 1 A*/A grade (or equivalent) across a range of subjects

14%

A Grades

20% of students achieved A grade or above: English Literature (20%), maths (22%), business studies (25%), history (33%), Arabic (50%) and Urdu (100%)

20%

45%

A Levels

45% of all students gained at least 1 A*/B grade (or equivalent) across a range of subjects

40%

Distinction

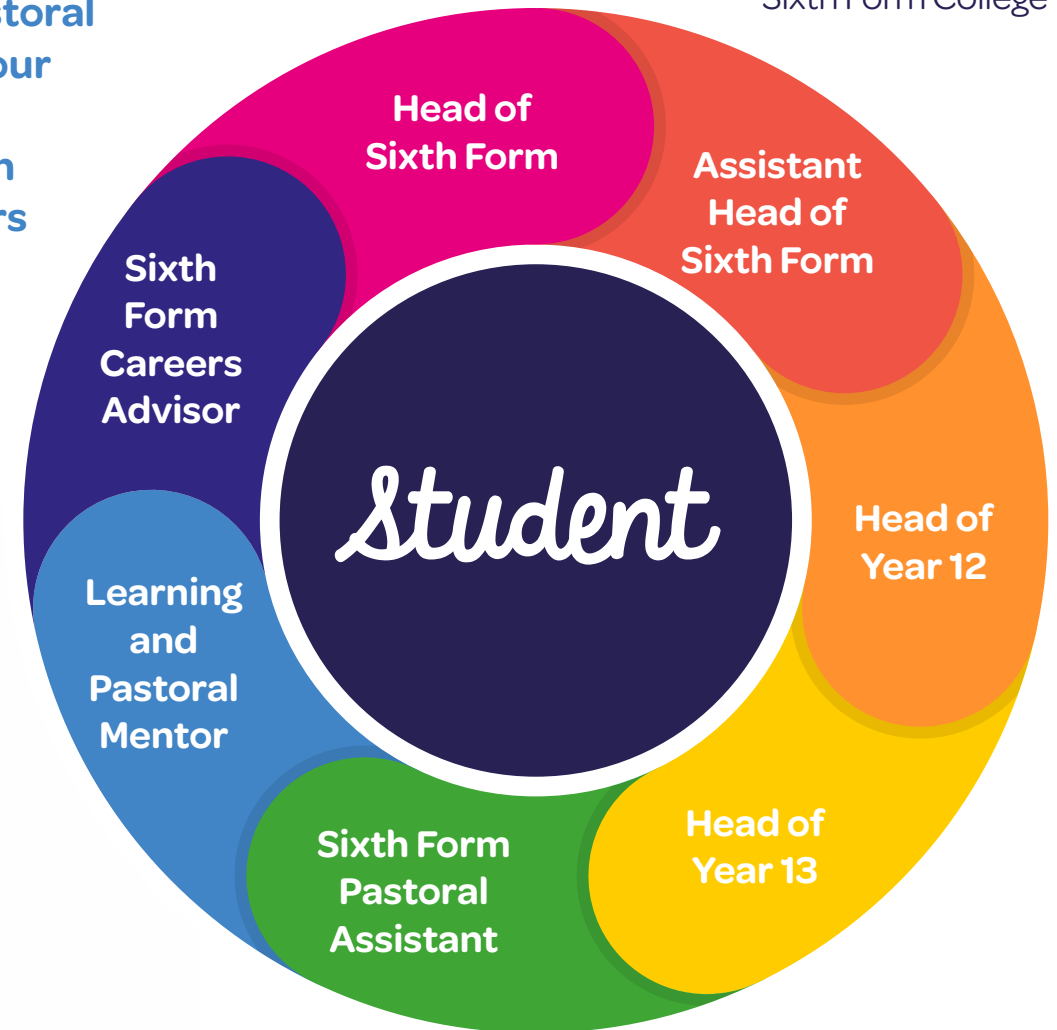
40% of students gaining Distinctions in Level 3 Business Diploma and Level 3 IT Extended Certificate

The Sixth Form Team



Whalley Range
Sixth Form College

Our dedicated Heads of Year, Form Tutors and Pastoral team offer personalised support to take care of your wellbeing and progress. Our exciting programme provides wrap-around support and advice on such areas as wellbeing, revision techniques and careers and progression, support and tracking, as well as one-to-one individualised support.



Support at Whalley Range Sixth Form College

Adapting to college life can be challenging, as it is different to what you have experienced at school. At Whalley Range Sixth Form we will support you at every stage in your journey and tailor this support to be bespoke to you. We want you to enjoy your time at Whalley Range Sixth Form and look back fondly on it, which is why we want to work so closely with you.

Pastoral support

Our dedicated Heads of Year, Form Tutors and Pastoral team offer personalised support to take care of your wellbeing and progress. Our exciting programme provides wrap around support and advice on such areas as wellbeing, revision techniques and careers and progression support and tracking as well as one to one individualised support.

Academic Mentoring

We are aware that the jump from GCSE to Sixth Form College is often the biggest in a student's educational journey and it can take time for students to adapt to the academic rigour of Sixth Form. Our Academic Mentors are able to support students and equip them with the skills needed to develop excellent independent learning skills. Our Whalley Range alumnae also offer additional support to students as they have first hand experience of what it takes to be successful at college.

Health and Wellbeing

As part of our Sixth Form, you will have access to our School Health Advisor and Wellbeing Professional who will be able to offer support and advice for both your physical and emotional needs, signposting you to support from a wide range of agencies and healthcare professionals, as well as giving one-to-one support. Access to our school counselling team is also available where required.

Safeguarding

Your safety is of the utmost importance to us and that is why we have a dedicated safeguarding team to ensure that everyone at Whalley Range 11-18 High School and Sixth Form feel safe. Safeguarding and risk management will be a feature during tutorials, assemblies and bespoke Personal Development Day offerings.

Equality and diversity

Whalley Range Sixth Form is a part of the diverse and vibrant hub of multicultural South Manchester and we are aware of the important role we play in supporting our local and citywide community. Whalley Range Sixth Form are committed to the equality and diversity standards and we celebrate all of the things that makes our college community so rich and diverse.

Finance

Learners who study at Whalley Range Sixth Form may be eligible to apply for a financial bursary. When you are interviewed, please discuss this with the member of staff interviewing you.

Beyond Whalley Range Sixth Form College



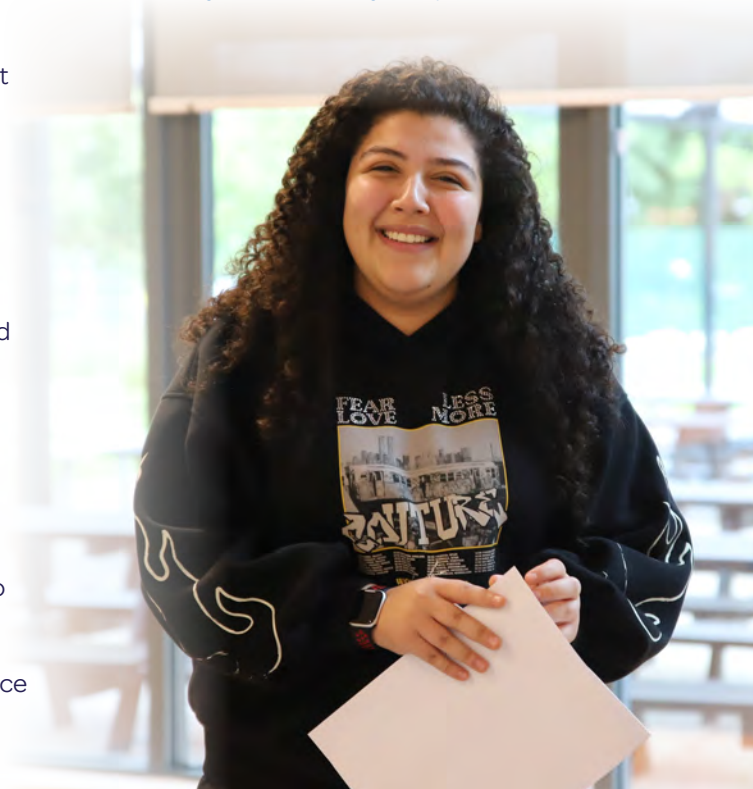
Whalley Range
Sixth Form College

Careers education, information and guidance (CEIAG) form a key part of the provision on offer at Whalley Range Sixth Form as our expert staff help to equip you with the skills to progress beyond Sixth Form, onto university, apprenticeships or employment.

In terms of support you will have one-to-one specialist CEIAG tutorials, opportunities to visit universities, access to higher education providers and trainers, one-to-one careers appointments and bespoke, wrap-around careers support ensuring that the next step you make is the right one for you.

Explore options for your future with bookable one-to-one sessions and drop ins with our careers advisor and access to our wide ranging programme of talks about careers and courses developed in partnership with Sixth Form students.

Prepare for successful application to universities, colleges, apprenticeships and careers with access to Unifrog and its unique resources. Your Form Tutor will help you discover the potential of Unifrog as a place to create your personal statement drafts, find out about courses, rank and filter courses/careers/pathways according to your preferences and unlock best-practice guidance at each stage of your application.



Year 12 student viewpoint



Learning about Mindset made me change my way of thinking for the start of Year 12. It really helped me to be focused and confident about my courses. I felt motivated and determined to work harder.



Our Personal Development Days offer you a chance to step out of your usual lessons and receive support and guidance on growth mindset, study skills, financial literacy and safeguarding themes.



Digital Connectivity

Digital access for all Sixth Formers

At Whalley Range Sixth Form we are committed to ensuring that all of our students have digital access, to enable them to perform to the best of their ability and engage with all classwork, homework and independent study.

When enrolling at our Sixth Form, all students without access to their own personal device to support their study will be issued with one for the duration of their time with us.

Our staff were early adopters of using digital technologies in their teaching and recognise the importance of connectivity and digital access for all of our students.

The Whalley Range Sixth Form digital promise

All Whalley Range Sixth Form students will:

- Be issued with an electronic device to support with their study, if they do not have one already
- Have access to the Microsoft Office 365 suite for free download
- Have training in use of digital technologies, including Teams, OneDrive, Outlook
- Receive high quality digital resources in lessons
- Access to computer suites and computer study area in the Sixth Form block

Enrichment

Wide-ranging experiences



Whalley Range
Sixth Form College

At Whalley Range Sixth Form we know that there is more to the college experience than the traditional academia and we aim to give students access to a wide range of opportunities and experiences. We want you to really enjoy your time here with us and this is why student voice is so important.

Staff viewpoint



In 2018, Whalley Range 11-18 High School was recognised for its outstanding contribution and commitment to the DofE programme with a visit from HRH Prince Edward. Currently we offer all three stages of the award and some students have opted for direct entry to the gold award.

Explore the opportunities

The enrichment programme enables you to pursue interests you have already developed or to explore new ones. **You can take up opportunities such as:**

- **The Duke of Edinburgh's Award**
- **Learn a new language**
- **Keep fit by playing a variety of sports**
- **Complete a leadership qualification**

There are also many volunteering and work experience opportunities. **Enrichment opportunities include:**


- **Culture club**
- **Media studio skills**
- **Science journal club**
- **Team sports**
- **Extended project qualification**

Enrichment gallery




 DofE changed my life



I have become more resilient and increased confidence in my own capabilities and the power of teamwork 



 The expedition pushed me to my physical and mental limits



Trips and events



Whalley Range
Sixth Form College

Sixth Form students have the opportunity to get involved in many non-subject based trips and activities throughout the year:

Art Exhibitions	Higher Education visits	Careers Fairs	Alton Towers	Blackpool Pleasure Beach
Trafford Centre	Charity Events	Theatre Performances	Cultural Events	Volunteering



Amazing trips!

In the past we have run a number of international trips, including visits to:

- Disneyland Paris
- London
- Spain
- Switzerland
- Italian ski trip

Student Leadership

At Whalley Range Sixth Form we have a rich history of student leadership and we are proud of the opportunities that our students have to develop their leadership skills to become leaders in the future.

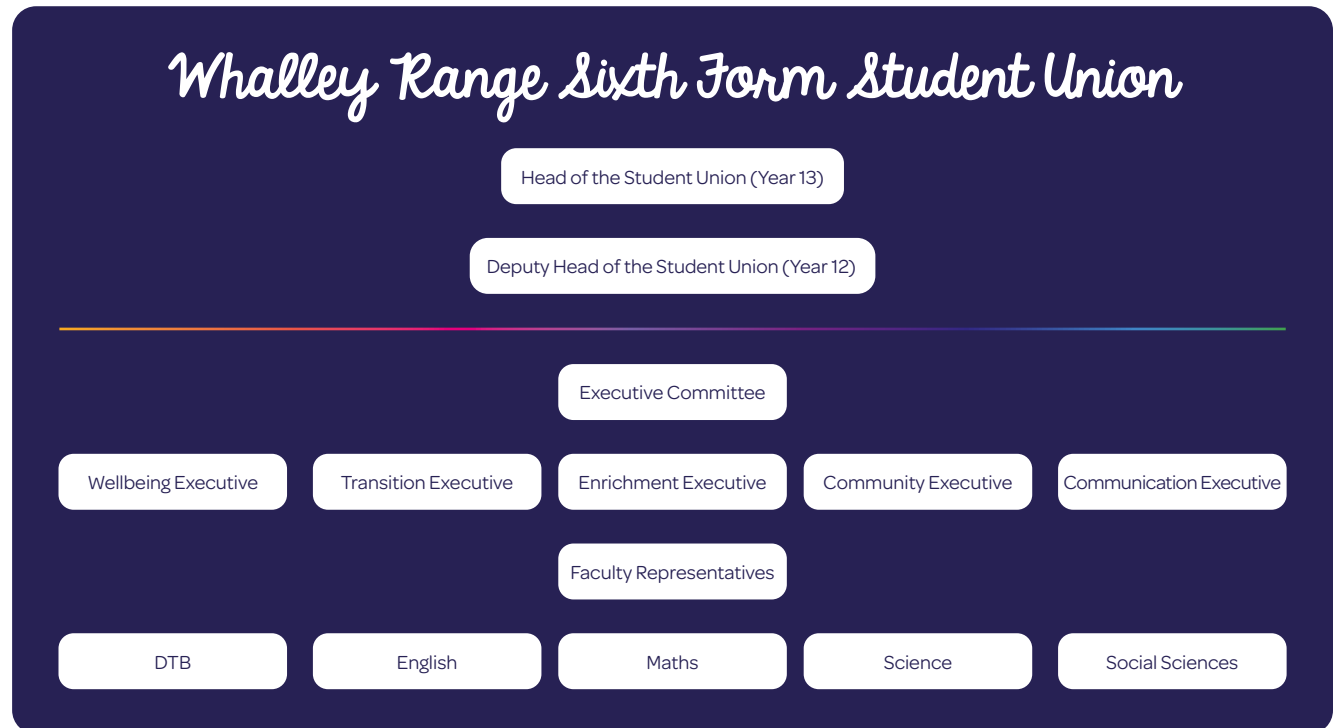
Our Sixth Form launched our student union, includes a range of roles as part of the Executive Committee that are central in the future of our Sixth Form community. As the Head of Sixth Form, I know how strong the leadership potential is within our student body and I welcome applications from students for one of our many exciting student union roles and would like to have students from every progression pathway represented within the Executive Committee.

Our student union works to improve the environment and experience of all Sixth Form students. They meet fortnightly with the Head of Sixth Form and have been instrumental in the installation of a hot drinks machine in the common room, organising an end of year trip to Alton Towers and holding many social events.

You are the future and you are our future! I look forward to reading your applications.



Mr Steven Mycock
Assistant Headteacher
Head of Sixth Form





Whalley Range
Sixth Form College

Medical and Dentistry Programme

At Whalley Range Sixth Form medical and dentistry applicants will have access to a bespoke medical and dentistry programme and receive guidance and support from expert colleagues from the Sixth Form and Careers & Progression Team.

As part of the medical and dentistry programme students will receive:

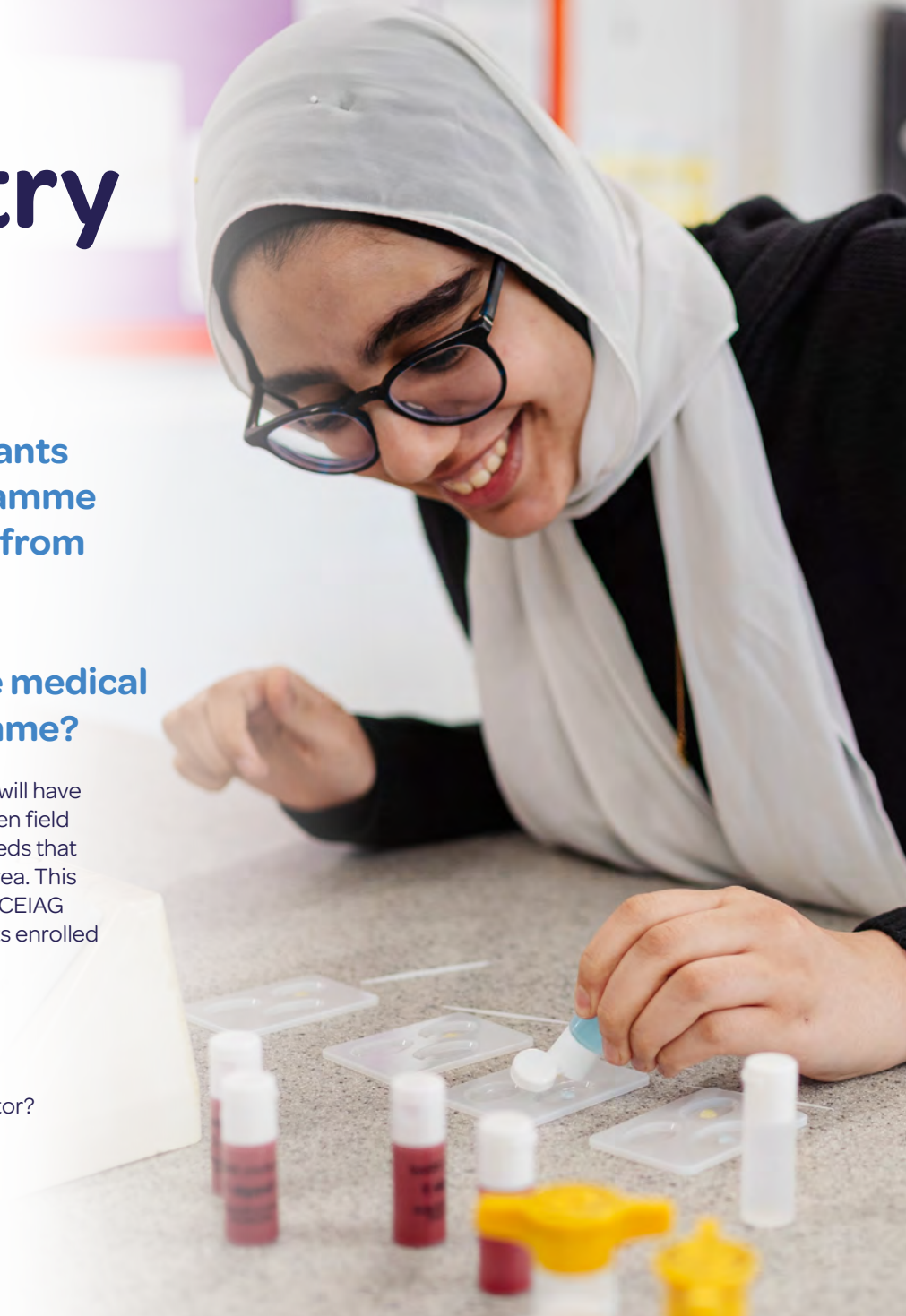
- Advice and guidance on their Advanced Level subject choices and university course options
- Support in accessing work experience, whether that be real life or remote
- Direction to volunteering opportunities that would support their career aspirations and university applications
- Interview practice with expert colleagues
- Opportunities to engage with professionals in the medical and dentistry field
- Priority access to our expert careers adviser
- First Aid training

What is included in the medical and dentistry programme?

Students at Whalley Range Sixth Form will have weekly access to support in their chosen field with sessions tailored to meet their needs that will be delivered by specialists in this area. This support will sit alongside the excellent CEIAG provision that is available to all students enrolled at our college.

Topic areas that will be explored:

- Is medicine for you?
- What qualities do you need as a doctor?
- What are UKCAT/BMAT?
- Choosing the right university
- Advice from professionals
- Personal statement support



How to apply to Whalley Range Sixth Form college



Whalley Range
Sixth Form College

To apply for a place in our Sixth Form you must submit an application form by the end of December 2023.

Application forms are available from the school website:

www.wrhs1118.co.uk/sixthform

Whalley Range Sixth Form College
Wilbraham Road
Whalley Range
Manchester
M16 8GW

T: 0161 860 2984

W: wrhs1118.co.uk/sixthform

Rise with us





Whalley Range
Sixth Form College



One child,
One teacher,
One book and one pen...
Can change the world.

Malala Yousafzai

Rise
with us



Whalley Range
Sixth Form College

Whalley Range Sixth Form College
Wilbraham Road
Whalley Range
Manchester
M16 8GW

T: 0161 860 2984

E: sixthform@wrhs1118.co.uk

W: wrhs1118.co.uk/sixthform

